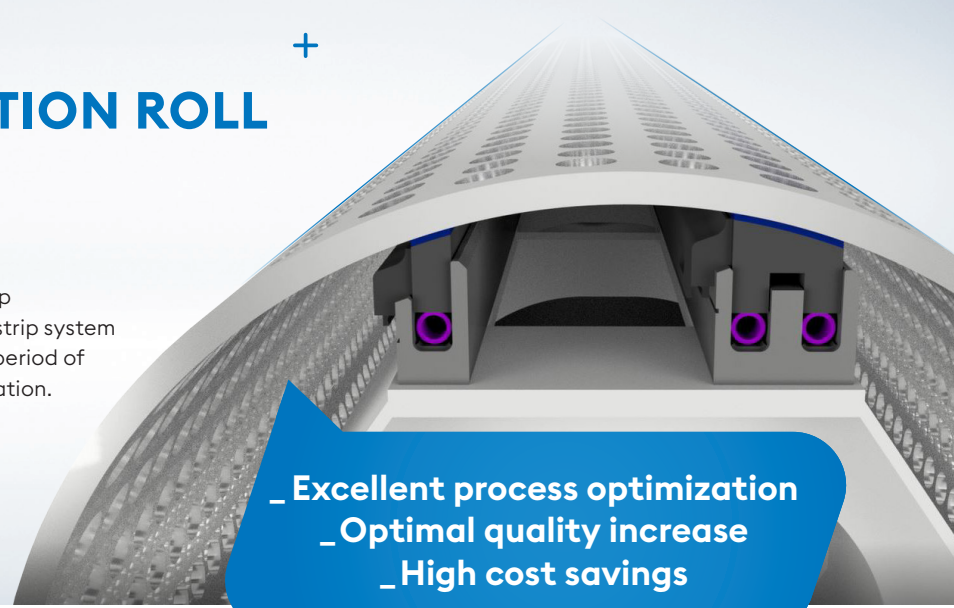


SMARTROLL INTELLIGENT SUCTION ROLL SEALING SYSTEM

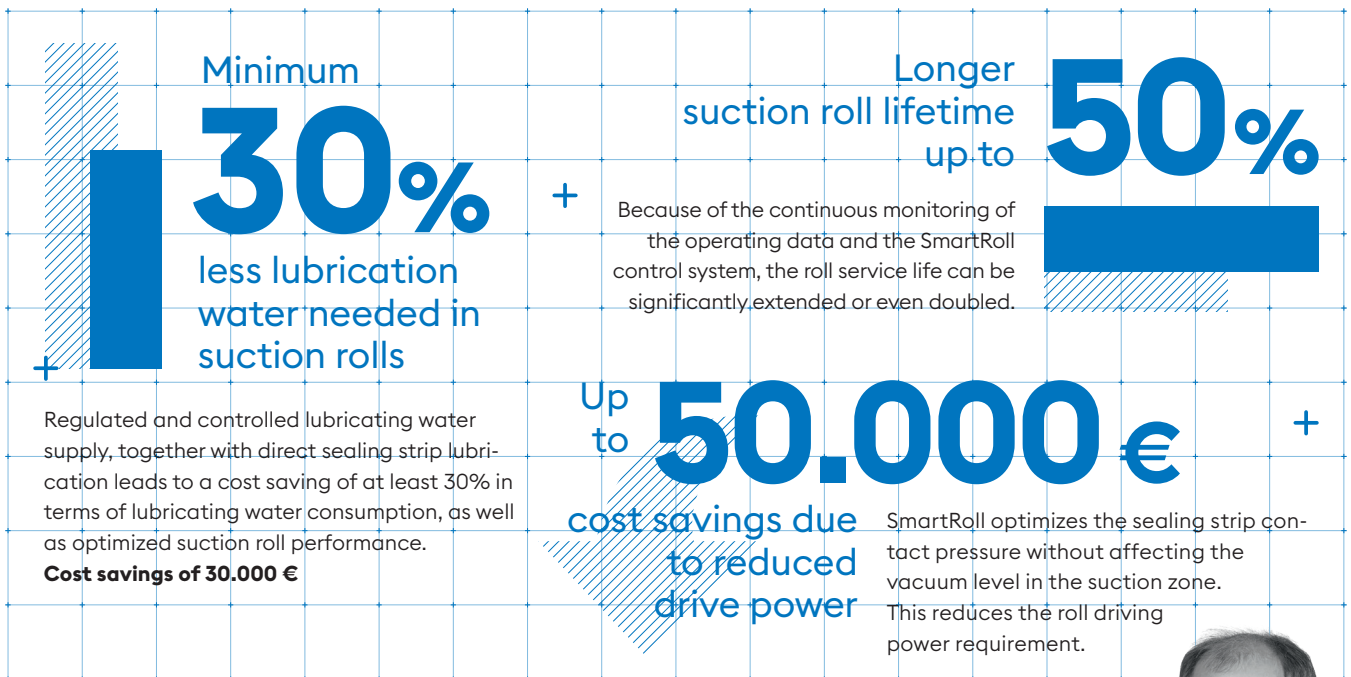
SmartRoll from Röchling Industrial Oepping defines a suction roll which continuously delivers information regarding the sealing strip system status. All components of the sealing strip system communicate with each other during the full period of operation, ensuring efficient suction roll operation.

SMARTROLL consists of:

- _ SMART Seal
- _ SMART Lubrication
- _ SMART Tube
- _ Control Box



- _ Excellent process optimization
- _ Optimal quality increase
- _ High cost savings



High operational safety
The continuous measurement and monitoring of key components in suction rolls significantly enhances the operational reliability of the complete paper machine.

Efficient machine runability
Suction rolls in paper machines have a considerable impact on paper production. With regulated, controlled suction rolls, the paper machine efficiency increases significantly.

Forward-looking planning possible
The ability to accept short-notice production orders depends on existing planned machine shutdowns. The continuous monitoring and communication of the suction roll components makes the decision to delay existing planned machine shutdowns much easier. This results in improved production flexibility.

**GIVE YOUR
SUCTION ROLLS
A SMART
UPDATE NOW!**



Anton Luger, +43 (0) 7289 4611-270
or ALuger@roebling.com



**SAVE 88t
CO₂ PER YEAR**

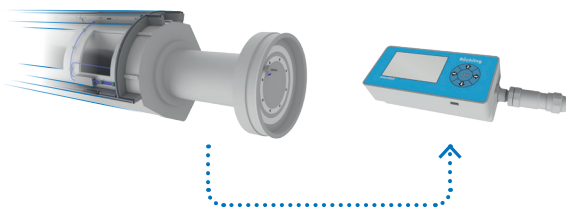
Due to reduced energy consumption.

SMARTROLL COMPONENTS

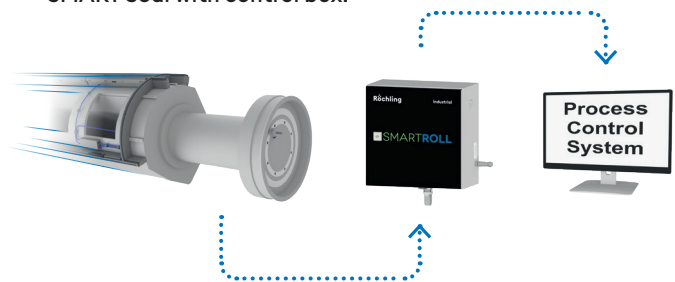
SMART SEAL

SMART Seal is a sealing strip with integrated programmed sensor technology, which sends information to selected visualization devices or to the operational control system at predefined time intervals.

SMART Seal with external visualization device:

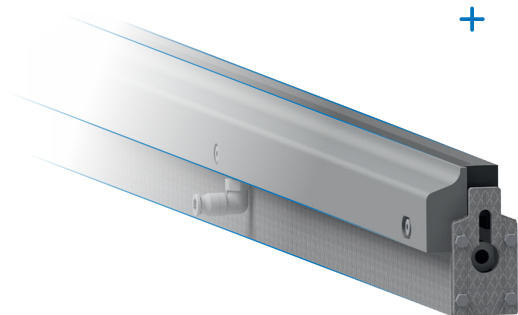


SMART Seal with control box:



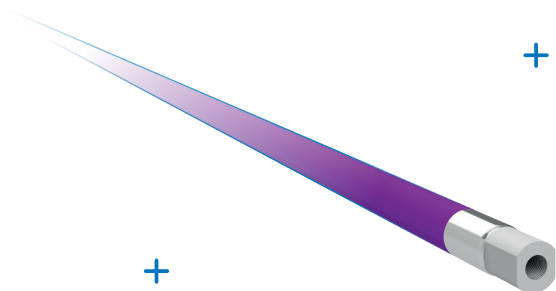
SMART LUBRICATION

Is a sealing strip holder with custom-specified lubricating water units.



SMART TUBE

Is a sealing strip loading tube which controls the tube contact pressure as a function of the target vacuum in the suction zone.



CONTROL BOX

with integrated PLC

The operating data of the individual smart components are captured using an integrated PLC, recorded via an external visualization device or forwarded directly to the operational control system.

An intelligent control logic regulates the exact lubricating water quantity as a function of the sealing temperature as well as the exact sealing strip contact pressure depending on the vacuum level in the suction zone.



SMARTROLL

SCHEMATIC VISUALIZATION

